

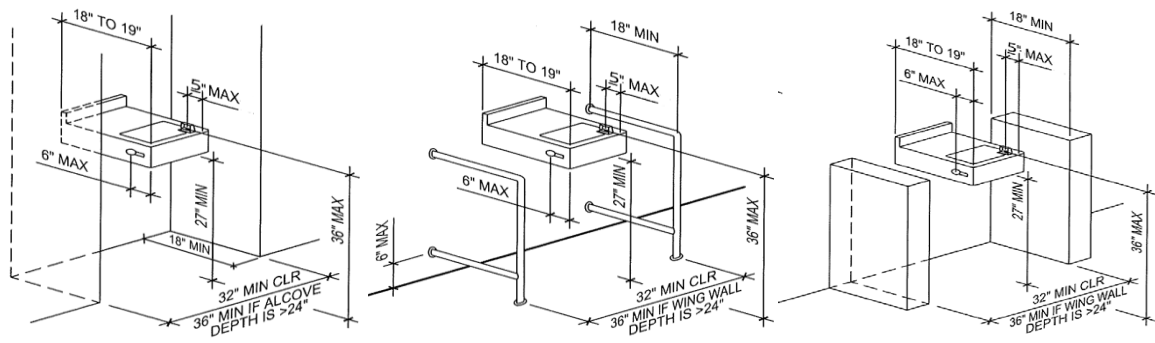


2019 CALIFORNIA BUILDING CODE - SECTION 11B-211 & DIVISION 6 GENERAL REQUIREMENTS FOR DRINKING FOUNTAINS

(This form may be used as a guide for checking Accessibility according with the 2019 California Building Code and shall not be considered a complete list of requirements)

Drinking Fountains (CBC 11B-211, 11B-307 & 11B-602)

- Application:** No fewer than two drinking fountains shall be provided per floor. One drinking fountain shall be accessible (comply with Sections 11B-602.1 through 11B-602.6) and one drinking fountain shall be for a standing person (comply with Sections 11B-602.7)
- Location:** All drinking fountains shall be either located completely within alcove, positioned completely between wing walls or otherwise positioned so as not to encroach into pedestrian walk ways. When used, the wing walls or barriers shall project horizontally at least as far the drinking fountain.
- Alcove Dimension:** 32" minimum wide x 18" minimum deep.
36" minimum wide where the depth exceeds 24".
- Clear Floor Space:** Minimum 30" x 48" for forward approach center at a low drinking fountain.
- Knee and Toe Clearance:** CBC 11B-306.2 & 11B-306.3.
- Depth:** 18" min. -19" max. for wall and post mounted cantilever drinking fountain.
- Spout Height:** 36" maximum above floor at low drinking fountain.
38"- 43" above floor at high drinking fountain. (standing person)
- Spout Location:** 15" minimum from supporting wall and 5" maximum from front edge of unit.
- Control:** Manually operated system that is front mounted or side mounted and located within 6" from the front edge OR automatic electronically controlled device.



FIGURES – DRINKING FOUNTAIN